

# INSTITUT FÜR INFORMATIK III

DER RHEINISCHEN FRIEDRICH-WILHELMS-UNIVERSITÄT BONN

## On Local Region Models and the Statistical Interpretation of the Piecewise Smooth Mumford-Shah Functional

Thomas Brox and Daniel Cremers

IAI-TR-2007-6

September 2007

# INSTITUT FÜR INFORMATIK III

DER RHEINISCHEN FRIEDRICH-WILHELMS-UNIVERSITÄT BONN

## On Local Region Models and the Statistical Interpretation of the Piecewise Smooth Mumford-Shah Functional

Thomas Brox and Daniel Cremers

IAI-TR-2007-6

September 2007

### Forschungsbericht Technical Report

ISSN 0944-8535

**Forschungsberichte sind erhältlich durch:**

Sekretariat für Forschungsberichte  
Institut für Informatik III  
Universität Bonn  
Römerstraße 164  
D-53117 Bonn  
Fax: (0228) 734-382  
E-mail: [techrep@cs.uni-bonn.de](mailto:techrep@cs.uni-bonn.de)

Anonymous ftp: [ftp.cs.uni-bonn.de /pub/paper/infIII](ftp://ftp.cs.uni-bonn.de/pub/paper/infIII)

**Technical reports can be requested from:**

Technical Reports Secretary  
Institute of Computer Science III  
University of Bonn  
Römerstraße 164  
D-53117 Bonn  
Germany  
Fax: +49 228 734-382

# On Local Region Models and the Statistical Interpretation of the Piecewise Smooth Mumford-Shah Functional

Supporting online material

Thomas Brox and Daniel Cremers  
Computer Vision Group, University of Bonn,  
Römerstr. 164, 53117 Bonn, Germany  
{brox,dcremers}@cs.uni-bonn.de

September 5, 2007

## Abstract

This report provides additional results on local region statistics and accompanies the work in [2]. In particular, we derive the Euler-Lagrange equations of the local Gaussian region model including variance as well as the local nonparametric model. Moreover, we show some experimental results on contour tracking with local region statistics.

## 1 Euler-Lagrange Equations for Local Region Statistics

Here we show that for energies based on local region statistics, in contrast to their first-order approximations, one can compute precise shape gradients. In order to minimize the Mumford-Shah functional, one usually alternates the optimization of the smooth region approximations given a preliminary partitioning and, vice-versa, the optimization of the partitioning given the smooth approximations. In fact, this is not a gradient descent but a coordinate descent. In case of local region statistics, the smooth region approximations are available in an analytic form by means of convolution expressions. Thus, their dependence on the partitioning can be considered when computing the Euler-Lagrange equations of the functional. This is *not* possible for the Mumford-Shah energy, since here the smooth approximation can only be computed numerically. Considering the dependence of the statistics on the partitioning, generally leads to additional secondary terms that respond to the changes of the distributions by moving points from one region to another.

Precise shape gradients including secondary terms are not unusual, though they are rarely implemented. A general work on this topic is [1]. In [6] secondary terms are computed for a homogeneous model with nonparametric densities, in [5] the secondary terms are given for the homogeneous Laplace distribution. In the latter work, it is shown empirically that these secondary terms have very little effect in case of the homogeneous Laplace distribution and can be neglected. In [9] it was shown that in case of the homogeneous Gaussian region model the secondary terms in fact turn out to be zero. In [7] the secondary terms for a local Gaussian distribution with fixed variance are derived, and they are brought in a form that allows for an efficient implementation. In case of local region models, implementation of these terms can have positive effects regarding the convergence of the energy [8].

In the following, we derive the Euler-Lagrange equations for the local Gaussian model including variance as well as the local nonparametric model. Contours are represented as zero-level lines of a number of level set functions  $\Phi_i : \Omega \rightarrow \mathbb{R}$ . The number of regions  $N$  is assumed to be fixed. The Euler-Lagrange equations we derive are subject to the side conditions:  $\bigcup_i \Omega_i = \Omega$  and  $\Omega_i \cap \Omega_j = \emptyset \forall i \neq j$ , i.e., there must be no vacuum or region overlap. How to integrate such side conditions efficiently in case of

multi-region segmentation is described in [3]. In the frequent two-region case, the side conditions are automatically satisfied by using a single level set function that separates foreground and background.

## 1.1 Gaussian model

Let us first consider the local Gaussian model, i.e., the energy functional

$$E(\Phi_i) = \sum_{i=1}^N \int_{\Omega} H(\Phi_i(\mathbf{x})) \left( \frac{(I(\mathbf{x}) - \mu_i(\mathbf{x}, \Phi_i))^2}{2\sigma_i^2(\mathbf{x}, \Phi_i)} + \frac{1}{2} \log \sigma_i^2(\mathbf{x}, \Phi_i) \right) + \nu |\nabla H(\Phi_i(\mathbf{x}))| \, d\mathbf{x}, \quad (1)$$

where  $H$  denotes the step function. For its derivative  $H'$  to exist, we assume that  $H$  is regularized appropriately. Note that the means and standard deviations depend on the contour represented by  $\Phi_i$ . The idea of the exact shape gradient is to take exactly this dependency into account. The contribution of the length constraint to the Euler-Lagrange equations is

$$\nu H'(\Phi_i(\mathbf{x})) \operatorname{div} \left( \frac{\nabla \Phi_i(\mathbf{x})}{|\nabla \Phi_i(\mathbf{x})|} \right) \quad (2)$$

and does not depend on the region model. We can thus concentrate on the data term. For better readability, we do not write the subindex  $i$  in the following, but simply write  $\Phi$  for  $\Phi_i$ ,  $\mu$  for  $\mu_i$ , and  $\sigma$  for  $\sigma_i$ . We are interested in the Euler-Lagrange equation of

$$E(\Phi) = \int_{\Omega} H(\Phi(\mathbf{x})) \left( \frac{(I(\mathbf{x}) - \mu(\mathbf{x}, \Phi))^2}{2\sigma^2(\mathbf{x}, \Phi)} + \frac{1}{2} \log \sigma^2(\mathbf{x}, \Phi) \right) \, d\mathbf{x} \quad (3)$$

First we make use of the analytic expressions for  $\mu$  and  $\sigma$  in dependence of  $\Phi$ :

$$\begin{aligned} \mu(\mathbf{x}) &= \frac{\int_{\Omega} K(\mathbf{x} - \zeta) H(\Phi(\zeta)) I(\zeta) \, d\zeta}{\int_{\Omega} K(\mathbf{x} - \zeta) H(\Phi(\zeta)) \, d\zeta} \\ \sigma^2(\mathbf{x}) &= \frac{\int_{\Omega} K(\mathbf{x} - \zeta) H(\Phi(\zeta)) I^2(\zeta) \, d\zeta}{\int_{\Omega} K(\mathbf{x} - \zeta) H(\Phi(\zeta)) \, d\zeta} - \mu^2(\mathbf{x}), \end{aligned} \quad (4)$$

where  $K$  can be any appropriate kernel function. In the models discussed in this paper  $K = G_{\rho}$  is an isotropic Gaussian kernel with standard deviation  $\rho$ . For computing the Euler-Lagrange equation of (3) we employ the Gâteaux derivative, i.e., we seek

$$\left. \frac{dE(\Phi(\mathbf{x}) + \epsilon h(\mathbf{x}))}{d\epsilon} \right|_{\epsilon \rightarrow 0} = 0 \quad (5)$$

for any function  $h(\mathbf{x})$ . We obtain

$$\begin{aligned} \left. \frac{dE(\Phi(\mathbf{x}) + \epsilon h(\mathbf{x}))}{d\epsilon} \right|_{\epsilon \rightarrow 0} &= \int_{\Omega} H'(\Phi(\mathbf{x})) \left( \frac{(I(\mathbf{x}) - \mu(\mathbf{x}))^2}{2\sigma^2(\mathbf{x})} + \log \sigma(\mathbf{x}) \right) h(\mathbf{x}) \, d\mathbf{x} \\ &\quad - \frac{1}{2} \int_{\Omega} H(\Phi(\mathbf{x})) \frac{2(I(\mathbf{x}) - \mu(\mathbf{x}))\mu_{\Phi}(\mathbf{x})\sigma^2(\mathbf{x}) + ((I(\mathbf{x}) - \mu(\mathbf{x}))^2 - \sigma(\mathbf{x})^2)\sigma_{\Phi}^2(\mathbf{x})}{\sigma^4(\mathbf{x})} \, d\mathbf{x} \end{aligned} \quad (6)$$

with

$$\mu_{\Phi}(\mathbf{x}) = \frac{\int_{\Omega} H'(\Phi(\zeta)) K(\mathbf{x} - \zeta) (I(\zeta) - \mu(\mathbf{x})) h(\zeta) \, d\zeta}{\int_{\Omega} H(\Phi(\mathbf{z})) K(\mathbf{x} - \mathbf{z}) \, d\mathbf{z}} \quad (7)$$

and

$$\sigma_{\Phi}^2(\mathbf{x}) = \frac{\int_{\Omega} H'(\Phi(\zeta)) K(\mathbf{x} - \zeta) \left( I^2(\zeta) - \frac{\int_{\Omega} H(\Phi(\mathbf{z})) K(\mathbf{x} - \mathbf{z}) I^2(\mathbf{z}) \, d\mathbf{z}}{\int_{\Omega} H(\Phi(\mathbf{z})) K(\mathbf{x} - \mathbf{z}) \, d\mathbf{z}} \right) h(\zeta) \, d\zeta}{\int_{\Omega} H(\Phi(\mathbf{z})) K(\mathbf{x} - \mathbf{z}) \, d\mathbf{z}} - 2\mu(\mathbf{x})\mu_{\Phi}(\mathbf{x}). \quad (8)$$

The first integral in (6) is clearly the usual part considered when applying coordinate descent. The second integral takes charge of the changes in the distribution by varying  $\Phi$ . Changing the order of integration and substituting  $\mathbf{x} \rightarrow \mathbf{y}$  and  $\zeta \rightarrow \mathbf{x}$  in this second integral, we obtain the Euler-Lagrange equation

$$\begin{aligned} 0 &= \frac{\partial E(\Phi)}{\partial \Phi} = H'(\Phi(\mathbf{x})) \left( \frac{(I(\mathbf{x}) - \mu(\mathbf{x}))^2}{2\sigma^2(\mathbf{x})} + \log \sigma(\mathbf{x}) \right) \\ &\quad - \frac{1}{2} H'(\Phi(\mathbf{x})) \int_{\Omega} \frac{K(\mathbf{y} - \mathbf{x}) H(\Phi(\mathbf{y}))}{\sigma^4(\mathbf{y}) \int_{\Omega} H(\Phi(\mathbf{z})) K(\mathbf{y} - \mathbf{z}) \, d\mathbf{z}} (2(I(\mathbf{y}) - \mu(\mathbf{y}))(I(\mathbf{x}) - \mu(\mathbf{y}))\sigma^2(\mathbf{y})) \, d\mathbf{y} \\ &\quad - \frac{1}{2} H'(\Phi(\mathbf{x})) \int_{\Omega} \frac{K(\mathbf{y} - \mathbf{x}) H(\Phi(\mathbf{y})) ((I(\mathbf{y}) - \mu(\mathbf{y}))^2 - \sigma^2(\mathbf{y}))}{\sigma^4(\mathbf{y}) \int_{\Omega} H(\Phi(\mathbf{z})) K(\mathbf{y} - \mathbf{z}) \, d\mathbf{z}} \left( I^2(\mathbf{x}) - \frac{\int_{\Omega} H(\Phi(\mathbf{z})) K(\mathbf{y} - \mathbf{z}) I^2(\mathbf{z}) \, d\mathbf{z}}{\int_{\Omega} H(\Phi(\mathbf{z})) K(\mathbf{y} - \mathbf{z}) \, d\mathbf{z}} - 2\mu(\mathbf{y})(I(\mathbf{x}) - \mu(\mathbf{y})) \right) \, d\mathbf{y}. \end{aligned}$$

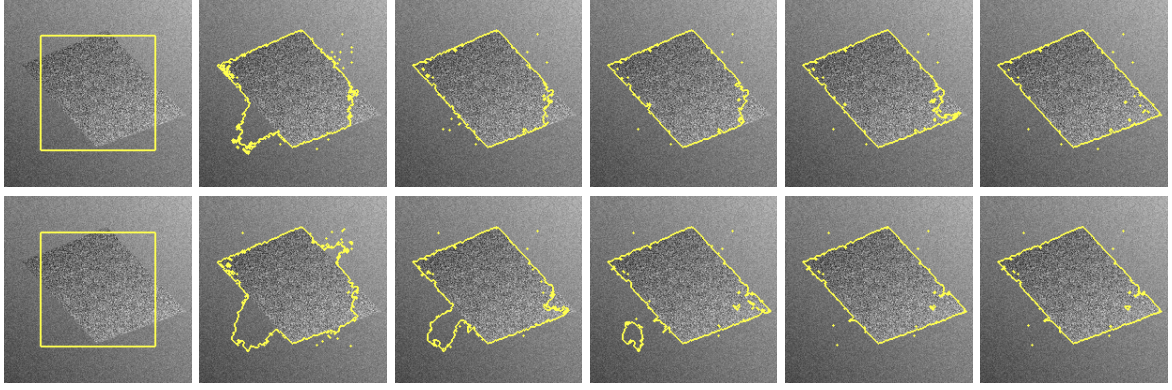


Figure 1: **Top row:** Contour evolution with coordinate descent. **Bottom row:** Contour evolution with gradient descent. **From left to right:** Result after 0, 50, 100, 200, 250, and 400 iterations,  $\rho = 12, \nu = 2$ .

(9)

The additional terms are rather complex. However, one can verify that for a kernel of infinite width they cancel out. This confirms the result in [9] and indicates that these terms are only important if the kernel width is rather small. In order to allow for a more efficient implementation of these terms we rearrange them and write them by convolutions. With the following abbreviations

$$\begin{aligned}
F_1(\mathbf{x}) &:= (K * H(\Phi))(\mathbf{x}) = \int_{\Omega} K(\mathbf{x} - \mathbf{y})H(\Phi(\mathbf{y}))d\mathbf{y} \\
F_2(\mathbf{x}) &:= (K * (H(\Phi)I))(\mathbf{x}) = \int_{\Omega} K(\mathbf{x} - \mathbf{y})H(\Phi(\mathbf{y}))I(\mathbf{y})d\mathbf{y} \quad \rightarrow \quad \mu(\mathbf{x}) = \frac{F_2(\mathbf{x})}{F_1(\mathbf{x})} \\
F_3(\mathbf{x}) &:= (K * (H(\Phi)I^2))(\mathbf{x}) = \int_{\Omega} K(\mathbf{x} - \mathbf{y})H(\Phi(\mathbf{y}))I^2(\mathbf{y})d\mathbf{y} \quad \rightarrow \quad \sigma^2(\mathbf{x}) = \frac{F_3(\mathbf{x})}{F_1(\mathbf{x})} - \mu^2(\mathbf{x}) \\
F_4(\mathbf{x}) &:= \left( \bar{K} * \frac{H(\Phi)((I - \mu)^2 - \sigma^2)}{\sigma^4 F_1} \right) (\mathbf{x}) = \int_{\Omega} \frac{K(\mathbf{y} - \mathbf{x})H(\Phi(\mathbf{y}))((I(\mathbf{y}) - \mu(\mathbf{y}))^2 - \sigma^2(\mathbf{y}))}{\sigma^4(\mathbf{y})F_1(\mathbf{y})} d\mathbf{y} \\
F_5(\mathbf{x}) &:= \left( \bar{K} * \frac{H(\Phi)(2I\sigma^2 - 2\mu(I - \mu)^2)}{\sigma^4 F_1} \right) (\mathbf{x}) \\
&= \int_{\Omega} \frac{K(\mathbf{y} - \mathbf{x})H(\Phi(\mathbf{y}))(2I(\mathbf{y})\sigma^2(\mathbf{y}) - 2\mu(\mathbf{y})(I(\mathbf{y}) - \mu(\mathbf{y}))^2)}{\sigma^4(\mathbf{y})F_1(\mathbf{y})} d\mathbf{y} \\
F_6(\mathbf{x}) &:= \left( \bar{K} * \frac{H(\Phi)\left(\sigma^2\left(\frac{F_3}{F_1} - 2I\mu\right) - (I - \mu)^2(\sigma^2 - \mu^2)\right)}{\sigma^4 F_1} \right) (\mathbf{x}) \\
&= \int_{\Omega} \frac{K(\mathbf{y} - \mathbf{x})H(\Phi(\mathbf{y}))\left(\sigma^2(\mathbf{y})\left(\frac{F_3(\mathbf{y})}{F_1(\mathbf{y})} - 2I(\mathbf{y})\mu(\mathbf{y})\right) - (I(\mathbf{y}) - \mu(\mathbf{y}))^2(\sigma^2(\mathbf{y}) - \mu^2(\mathbf{y}))\right)}{\sigma^4(\mathbf{y})F_1(\mathbf{y})} d\mathbf{y},
\end{aligned}$$

where  $\bar{K}$  denotes the mirrored kernel  $K$ , the Euler-Lagrange equation (1.1) becomes more concise

$$H'(\Phi(\mathbf{x})) \left( \frac{(I(\mathbf{x}) - \mu(\mathbf{x}))^2}{2\sigma^2(\mathbf{x})} + \log \sigma(\mathbf{x}) - \frac{1}{2} (I^2(\mathbf{x})F_4(\mathbf{x}) + I(\mathbf{x})F_5(\mathbf{x}) + F_6(\mathbf{x})) \right) = 0 \quad (10)$$

and can be implemented rather efficiently using recursive filters. The convolutions  $F_1, \dots, F_3$  are already needed to implement the primary terms. Hence, the secondary terms require only three additional convolutions and one additional division. The supplementary additions and multiplications are comparatively cheap.

Figure 1 compares coordinate descent and gradient descent (including the additional terms). The gradient descent converges slightly faster. On the other hand, computation takes 7.4ms per region and iteration in case of coordinate descent, whereas the additional terms slow down the gradient descent to 13ms per region and iteration.

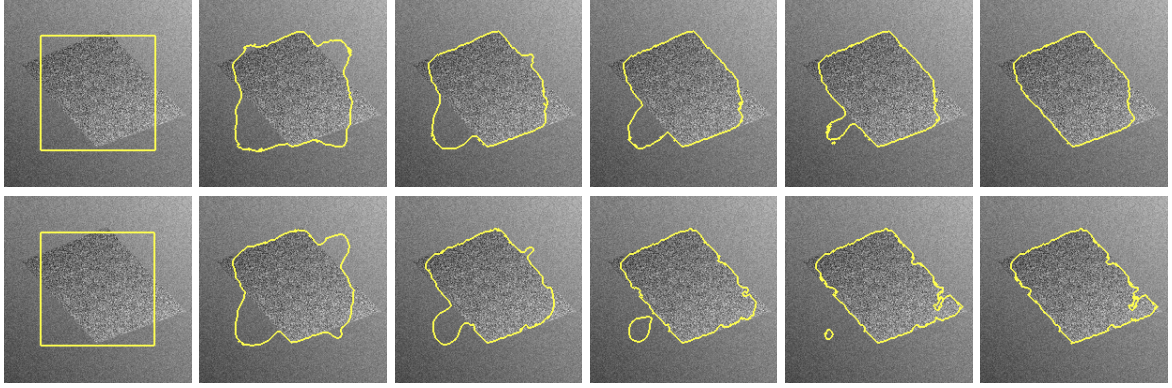


Figure 2: **Top row:** Contour evolution with coordinate descent. **Bottom row:** Contour evolution with gradient descent. **From left to right:** Result after 0, 50, 100, 200, 250, and 400 iterations,  $\rho = 12, \nu = 4$ .

## 1.2 Nonparametric model

Similar to the local Gaussian model, we can compute a shape gradient for the local nonparametric model by deriving the Euler-Lagrange equation of

$$E(\Phi) = - \int_{\Omega} H(\Phi(\mathbf{x})) \log p(I(\mathbf{x}), \mathbf{x}, \Phi) \, d\mathbf{x}. \quad (11)$$

Again we exploit the possibility to express  $p(I(\mathbf{x}), \mathbf{x})$  in dependence of  $\Phi$  analytically:

$$p(I(\mathbf{x}), \mathbf{x}) = \frac{\int_{\Omega} K(\mathbf{x} - \zeta) H(\Phi(\zeta)) K_h(I(\mathbf{x}) - I(\zeta)) \, d\zeta}{\int_{\Omega} K(\mathbf{x} - \zeta) H(\Phi(\zeta)) \, d\zeta}, \quad (12)$$

where  $K : \mathbb{R}^2 \rightarrow \mathbb{R}_0^+$  denotes a spatial kernel as above, whereas  $K_h : \mathbb{R} \rightarrow \mathbb{R}_0^+$  is a tonal kernel due to the Parzen estimator. Plugging (12) into (11) we obtain

$$\left. \frac{dE(\Phi(\mathbf{x}) + \epsilon h(\mathbf{x}))}{d\epsilon} \right|_{\epsilon \rightarrow 0} = - \int_{\Omega} H'(\Phi(\mathbf{x})) \log p(I(\mathbf{x}), \mathbf{x}) h(\mathbf{x}) \, d\mathbf{x} - \int_{\Omega} H(\Phi(\mathbf{x})) \frac{p_{\Phi}(I(\mathbf{x}), \mathbf{x})}{p(I(\mathbf{x}), \mathbf{x})} \, d\mathbf{x} \quad (13)$$

with

$$p_{\Phi}(I(\mathbf{x}), \mathbf{x}) = \frac{\int_{\Omega} K(\mathbf{x} - \zeta) H'(\Phi(\mathbf{x})) \left( K_h(I(\mathbf{x})) - I(\zeta) \right) - \frac{\int_{\Omega} K(\mathbf{x} - \mathbf{z}) H(\Phi(\mathbf{z})) K_h(I(\mathbf{x}) - I(\mathbf{z})) \, d\mathbf{z}}{\int_{\Omega} K(\mathbf{x} - \mathbf{z}) H(\Phi(\mathbf{z})) \, d\mathbf{z}} \right) h(\zeta) \, d\zeta}{\int_{\Omega} K(\mathbf{x} - \mathbf{z}) H(\Phi(\mathbf{z})) \, d\mathbf{z}}. \quad (14)$$

Again, the second part of (13) is due to considering the dependence of  $p(I(\mathbf{x}), \mathbf{x})$  on  $\Phi$ . In this second part, we change the order of integration and substitute  $\mathbf{x} \rightarrow \mathbf{y}$  and  $\zeta \rightarrow \mathbf{x}$ . Then we obtain the following Euler-Lagrange equation:

$$-H'(\Phi(\mathbf{x})) \left( \log p(I(\mathbf{x}), \mathbf{x}) + \int_{\Omega} \frac{K(\mathbf{y} - \mathbf{x}) H(\Phi(\mathbf{y})) \left( K_h(I(\mathbf{y})) - I(\mathbf{x}) \right) - p(I(\mathbf{y}), \mathbf{y})}{p(I(\mathbf{y}), \mathbf{y}) \int_{\Omega} K(\mathbf{y} - \mathbf{z}) H(\Phi(\mathbf{z})) \, d\mathbf{z}} \right) \, d\mathbf{y} \right) = 0 \quad (15)$$

By using binned histograms, the integrals can be implemented via convolutions like in the Gaussian model.

Figure 2 compares such an implementation including the additional term to the simple coordinate descent. One can observe that the gradient descent reaches a different, not necessarily better, local minimum. The computation time increases from 90ms to 152ms per region and iteration for an implementation with 32 bins. Note that in contrast to the Gaussian model, the additional term does not cancel out when  $\rho \rightarrow \infty$ .

## 2 Contour Tracking

The present section briefly demonstrates a reasonable practical application for local region statistics or the piecewise smooth Mumford-Shah functional, respectively: the tracking of silhouettes in image sequences. As we have seen, local minima are the major problem of local region statistics. Hence, in order to work well in practice, the application should provide sufficiently close contour initializations.

In contour tracking, this is the case, at least as long as the motion between successive frames is not too fast. Another such application is, for instance, medical image segmentation [7].

Figure 3 demonstrates tracking the silhouette of a car in a typical traffic scenario. The texture feature space proposed in [4] has been employed in order to enrich the available input data. Nonetheless, regarding the image statistics globally across the whole image, there is no cue that would distinguish the tracked car from the background. Locally, however, the car can be well separated from its surroundings in most of the frames. Hence, a local Gaussian region model including variance can track the car quite well, whereas a homogenous model, though nonparametric, clearly fails, as Figure 4 reveals. Note that in this sequence, the camera moves towards the tracked object. Consequently, the displacements of the object in the image become larger from frame to frame. The last frames in Figure 3 demonstrate that this can lead to initializations that are too far from the sought solution. Such problems could be avoided in a more sophisticated tracking framework that comprises a prediction of the displacement. Here, we purposely show the result of the pure segmentation approach that separates foreground and background in each frame.

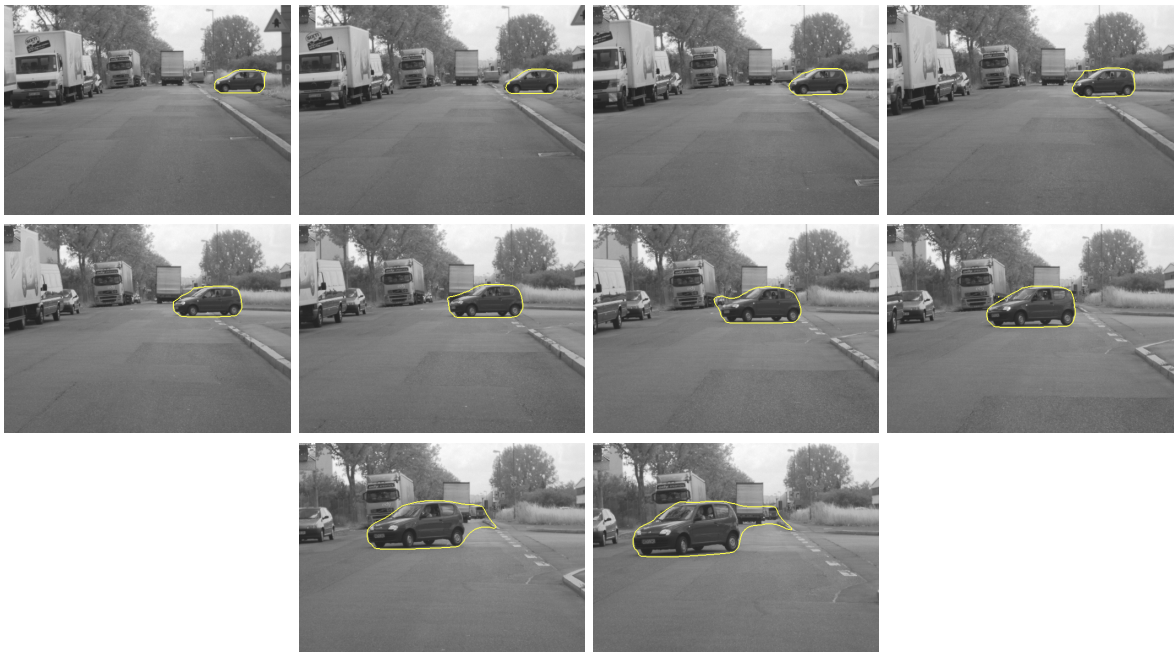


Figure 3: Tracking the silhouette of a car with the Mumford-Shah functional including variance.  $\nu = 45, \lambda = 72$ . Input channels are, apart from the gray value, the texture features from [4]. Every fifth frame is shown. Note that the camera is moving towards the tracked object. Locally, the car can be well separated from the background (compare Figure 4). Only when the silhouette changes too fast, the contour from the previous frame is not a sufficiently close initialization anymore.



Figure 4: Same setting as in Figure 3 but modeling foreground and background with a global Parzen distribution. Only the strong smoothness constraint ( $\nu = 45$ ) prevents the contour from capturing even larger parts of the background. Clearly, object and background cannot be distinguished based on spatially uniform feature distributions.

## References

- [1] G. Aubert, M. Marlaud, O. Faugeras, and S. Jehan-Besson. Image segmentation using active contours: calculus of variations or shape gradients? *SIAM Journal on Applied Mathematics*, 63(6):2128–2154, 2003.
- [2] T. Brox and D. Cremers. On local region models and the statistical interpretation of the piecewise smooth Mumford-Shah functional. *International Journal of Computer Vision*. Submitted.
- [3] T. Brox and J. Weickert. Level set segmentation with multiple regions. *IEEE Transactions on Image Processing*, 15(10):3213–3218, 2006.
- [4] T. Brox and J. Weickert. A TV flow based local scale estimate and its application to texture discrimination. *Journal of Visual Communication and Image Representation*, 17(5):1053–1073, Oct. 2006.
- [5] M. Heiler and C. Schnörr. Natural image statistics for natural image segmentation. *International Journal of Computer Vision*, 63(1):5–19, 2005.
- [6] J. Kim, J. Fisher, A. Yezzi, M. Cetin, and A. Willsky. A nonparametric statistical method for image segmentation using information theory and curve evolution. *IEEE Transactions on Image Processing*, 14(10):1486–1502, 2005.
- [7] J. Piovano, M. Rousson, and T. Papadopoulo. Efficient segmentation of piecewise smooth images. In F. Sgallari, A. Murli, and N. Paragios, editors, *Scale Space and Variational Methods in Computer Vision*, volume 4485 of *LNCS*, pages 709–720. Springer, 2007.
- [8] M. Rousson. Personal communication, May 2007.
- [9] M. Rousson and R. Deriche. A variational framework for active and adaptive segmentation of vector-valued images. In *Proc. IEEE Workshop on Motion and Video Computing*, pages 56–62, Orlando, Florida, Dec. 2002.



## Liste der erschienenen Berichte / Publication list

- IAI-TR-91-1** AXIOMS FOR CONCURRENT PROCESSES  
Armin B. Cremers and Thomas N. Hibbard  
Juni 1991.
- IAI-TR-92-1** THE CATEGORICAL ABSTRACT MACHINE:  
BASICS AND ENHANCEMENTS  
Ralf Hinze  
Dezember 1992.
- IAI-TR-92-2** ON PERFECT INTROSPECTION WITH QUANTIFYING-IN  
Gerhard Lakemeyer  
Dezember 1992.
- IAI-TR-92-3** ALL YOU EVER WANTED TO KNOW ABOUT TWEETY  
Gerhard Lakemeyer  
Dezember 1992.
- IAI-TR-93-1** EXPLORATION AND MODEL BUILDING IN MOBILE  
ROBOT DOMAINS  
Sebastian B. Thrun  
Januar 1993.
- IAI-TR-93-2** BEST APPROXIMATE GENERAL ELLIPSES ON INTEGER  
GRIDS  
Dieter W. Fellner and Christoph Helmberg  
Januar 1993.
- IAI-TR-93-3** PROGRAMMING IN PROPOSITIONAL LOGIC  
OR REDUCTIONS: BACK TO THE ROOTS (SATISFIABILITY)  
Hermann Stamm-Wilbrandt  
März 1993
- IAI-TR-93-4** EXTENSIBLE IMAGE SYNTHESIS  
Dieter W. Fellner  
April 1993.
- IAI-TR-93-5** EXTRACTING PROVABLY CORRECT RULES  
FROM ARTIFICIAL NEURAL NETWORKS  
Sebastian B. Thrun  
Mai 1993.
- IAI-TR-93-6** ADAPTIVE STEUERUNG VON STRATEGIEPARAMETERN  
BEI GENETISCHEN ALGORITHMEN  
Andreas Bergmann  
Juni 1993.
- IAI-TR-93-7** LIFELONG ROBOT LEARNING  
Sebastian B. Thrun and Tom M. Mitchell  
Juli 1993.

- IAI-TR-93-8** SITUATION SCHEMATA  
AS REPRESENTATION FORMAT AND QUERY LANGUAGE  
FOR A NON-STANDARD DATABASE SYSTEM  
Armin B. Cremers, Thomas Lemke,  
Volker Paul and Marion Schulz  
August 1993.
- IAI-TR-93-9** CGI++  
A 2D GRAPHICS INTERFACE  
BASED ON CGI  
Dieter W. Fellner and Martin Fischer  
August 1993.
- IAI-TR-93-10** A SIMPLE LINEAR TIME ALGORITHM  
FOR EMBEDDING MAXIMAL PLANAR GRAPHS  
Hermann Stamm-Wilbrandt  
Oktober 1993.
- IAI-TR-94-1** LOGIC PROGRAM MODULES FOR  
INTEROPERABLE INFORMATION  
SYSTEMS  
Armin B. Cremers, Thomas Lemke and  
Mechthild Rohen  
Mai 1994.
- IAI-TR-94-2** PLANAR EMBEDDING OF HAMILTONIAN GRAPHS  
VIA EFFICIENT BIPARTITION OF CIRCLE GRAPHS  
Christoph Hundack and  
Hermann Stamm-Wilbrandt  
Juni 1994.
- IAI-TR-94-3** IMPLEMENTATION OF DYNAMIC DELEGATION  
IN STRONGLY TYPED INHERITANCE-BASED SYSTEMS  
Günter Kniesel  
Oktober 1994.
- IAI-TR-94-4** UPDATE PROPAGATION IN CHIMERA,  
AN ACTIVE DOOD LANGUAGE  
Ulrike Griefahn and Rainer Manthey  
Oktober 1994.
- IAI-TR-94-5** REFLECTIONS ON SOME FUNDAMENTAL ISSUES OF  
RULE-BASED INCREMENTAL UPDATE PROPAGATION  
Rainer Manthey  
Oktober 1994.

- IAI-TR-95-1** MODELLE FÜR DIE PHOTOGRAMMETRISCHE  
GEBÄUDEKONSTRUKTION  
C. Braun, T.H. Kolbe, F. Lang, W. Schickler,  
V. Steinhage, A.B. Cremers, W. Förstner and  
L. Plümer  
Januar 1995.
- IAI-TR-95-2** THE MOBILE ROBOT RHINO  
J. Buhmann, W. Burgard, A.B. Cremers,  
D. Fox, T. Hofmann, F. Schneider,  
J. Strikos and S. Thrun  
Januar 1995.
- IAI-TR-95-3** LEVESQUE'S AXIOMATIZATION OF ONLY KNOWING  
IS INCOMPLETE  
Joseph Y. Halpern and Gerhard Lakemeyer  
Januar 1995.
- IAI-TR-95-4** FIRST SPECIFICATION OF PHOENIX,  
AN ACTIVE DATABASE PROGRAMMING LANGUAGE  
Ulrike Griefahn  
Januar 1995.
- IAI-TR-95-5** EXTENDED CIRCLE GRAPHS I  
Christoph Hundack and Hermann Stamm-Wilbrandt  
März 1995.
- IAI-TR-95-6** KNOWLEDGE-ENHANCED CO-MONITORING IN  
COAL MINES  
Wolfram Burgard and Armin B. Cremers and  
Dieter Fox and Martin Heidelbach and  
Angelica M. Kappel and Stefan Lüttringhaus-Kappel  
März 1995.
- IAI-TR-95-7** PAIRWISE DATA CLUSTERING BY  
DETERMINISTIC ANNEALING  
Joachim M. Buhmann and Thomas Hofmann  
Juni 1995.
- IAI-TR-95-8** PENGUIN - A PORTABLE ENVIRONMENT  
FOR A GRAPHICAL USER INTERFACE  
Dieter W. Fellner and Martin Fischer  
Juni 1995.
- IAI-TR-95-9** A PORTABLE ALGORITHM FOR  
DYNAMIC COLOR MANAGEMENT  
Martin Fischer  
Juni 1995.

- IAI-TR-95-10** DISTRIBUTED CGI<sup>++</sup> - EINE CLIENT/SERVER-LÖSUNG ZUR ENTWICKLUNG LEISTUNGSFÄHIGER COMPUTERGRAPHIK-ANWENDUNGEN  
Dieter W. Fellner and Martin Fischer  
Juli 1995.
- IAI-TR-95-11** RUNTIME TYPE FOR CLASS HIERARCHIES  
Martin Fischer  
Juli 1995.
- IAI-TR-95-12** REFERENCE POINTER FOR CLASS HIERARCHIES  
Martin Fischer  
August 1995.
- IAI-TR-95-13** THE DYNAMIC WINDOW APPROACH TO COLLISION AVOIDANCE  
Dieter Fox, Wolfram Burgard  
and Sebastian Thrun  
August 1995.
- IAI-TR-96-1** ESTIMATING THE ABSOLUTE POSITION OF A MOBIL ROBOT USING POSITION PROBABILITY GRIDS  
Wolfram Burgard, Dieter Fox  
Daniel Hennig and Timo Schmidt  
Februar 1996.
- IAI-TR-96-2** A DETERMINISTIC ANNEALING FRAMEWORK FOR UNSUPERVISED TEXTURE SEGMENTATION  
Thomas Hofmann, Jan Puzicha and  
Joachim M. Buhmann  
Februar 1996.
- IAI-TR-96-3** MAP LEARNING AND HIGH-SPEED NAVIGATION IN RHINO  
S. Thrun, A. Bücken, W. Burgard,  
D. Fox, T. Fröhlinghaus, D. Hennig,  
T. Hofmann, M. Krell and T. Schmidt  
Juli 1996.
- IAI-TR-96-4** BELIEF REVISION IN A NONCLASSICAL LOGIC  
Gerhard Lakemeyer and Wilfried Lang  
Juli 1996.
- IAI-TR-96-5** BILDVERARBEITUNG UND MUSTERERKENNUNG  
W. Förstner und A.B. Cremers  
Juli 1996.
- IAI-TR-96-6** IMPLEMENTING CHIMERA ON TOP OF AN ACTIVE RELATIONAL DATABASE SYSTEM  
Ulrike Griefahn and Thomas Lemke  
Juli 1996.

- IAI-TR-96-7** PROPAGATION RULE COMPILER:  
TECHNICAL DOCUMENTATION  
Ulrike Griefahn and Thomas Rath  
Juli 1996.
- IAI-TR-96-8** DATA VISUALIZATION BY MULTIMENSIONAL SCALING:  
A DETERMINISTIC ANNEALING APPROACH  
Joachim Buhmann and Hansjörg Klock  
Oktober 1996.
- IAI-TR-96-9** MONADIC-STYLE BACKTRACKING  
Ralf Hinze  
Oktober 1996.
- IAI-TR-96-10** THE SYSTEM COBREP: AUTOMATIC CONVERSION OF  
CSG BUILDING DATA TO BOUNDARY REPRESENTATION  
Roman Englert  
Oktober 1996.
- IAI-TR-96-11** OBJECTS DON'T MIGRATE!  
Günter Kniesel  
April 1996.
- IAI-TR-96-12** ENCAPSULATION - VISABILITY AND ACCESS RIGHTS  
Günter Kniesel  
November 1996.
- IAI-TR-96-13** MAINTAINING LIBRARY CATALOGUES WITH AN RDBMS  
- A PERFORMANCE STUDY -  
O. Balownew, T. Bode, A.B. Cremers,  
J. Kalinski, J.E. Wolff, H. Rottmann  
November 1996.
- IAI-TR-96-14** HIERARCHICAL RADIOSITY ON TOPOLOGICAL DATA STRUCTURES  
Heinzgerd Bendels, Dieter W. Fellner,  
Stephan Schäfer  
November 1996.
- IAI-TR-97-1** CLOSING THE GAP BETWEEN MODELING AND RADIOSITY  
Dieter W. Fellner, Stephan Schäfer  
Januar 1997.
- IAI-TR-97-2** P-SUBGRAPH ISOMORPHISM COMPUTATION  
AND UPPER BOUND COMPLEXITY ESTIMATION  
Roman Englert, Jörg Seelmann-Eggebert  
Januar 1997.
- IAI-TR-97-3** ACTIVE MOBILE ROBOT LOCALIZATION  
Wolfram Burgard, Dieter Fox and Sebastain Thrun  
Februar 1997.

- IAI-TR-97-4** MULTISCALE ANNEALING FOR REAL-TIME UNSUPERVISED TEXTURE SEGMENTATION  
Jan Puzicha and Joachim M. Buhmann  
April 1997.
- IAI-TR-97-5** THE MYVIEW SYSTEM: TACKLING THE INTERFACE PROBLEM  
J.E. Wolff and J. Kalinski  
Dezember 1997.
- IAI-TR-98-1** ON SPATIAL QUANTIZATION OF COLOR IMAGES  
Jan Puzicha, Marcus Held, Jens Ketterer,  
Joachim M. Buhmann, Dieter W. Fellner  
Januar 1998.
- IAI-TR-98-2** A RECONFIGURABLE IMAGE CAPTURE AND IMAGE PROCESSING SYSTEM FOR AUTONOMOUS ROBOTS - A PROPOSAL -  
Tom Arbuckle, Michael Beetz,  
and Boris Trouvain  
Januar 1998.
- IAI-TR-98-3** EMPIRICAL RISK APPROXIMATION: AN INDUCTION PRINCIPLE FOR UNSUPERVISED LEARNING  
Joachim M. Buhmann  
April 1998.
- IAI-TR-98-4** TYPE-SAFE DELEGATION FOR DYNAMIC COMPONENT ADAPTATION  
Günter Kniesel  
Mai 1998.
- IAI-TR-98-5** DELEGATION FOR JAVA: API OR LANGUAGE EXTENSION?  
Günter Kniesel  
Mai 1998.
- IAI-TR-98-6** EXPERIENCES WITH AN INTERACTIVE MUSEUM TOUR-GUIDE ROBOT  
Wolfram Burgard, Armin B. Cremers, Dieter Fox,  
Dirk Hähnel, Gerhard Lakemeyer, Dirk Schulz,  
Walter Steiner, Sebastian Thrun  
Juni 1998.
- IAI-TR-98-7** SUPPORT VECTOR MACHINES FOR LAND USAGE CLASSIFICATION IN LANDSAT TM IMAGERY  
Lothar Hermes, Jan Puzicha, Dieter Frieauff,  
and Joachim M. Buhmann  
Juni 1998.

- IAI-TR98-8** AUFNAHME UND INTELLIGENTE AUSWERTUNG  
GROSSFLÄCHIGER SZENEN  
A. Brunn, R. Englert, Th. Hau,  
A.B. Cremers und W. Förstner  
September 1998.
- IAI-TR-98-9** KOMPONENTENBASIERTE ANPASSBARKEIT VON GROUPWARE  
Oliver Stiernerling  
September 1998.
- IAI-TR-98-10** POLYTYPIC FUNCTIONS OVER NESTED DATATYPES  
Ralf Hinze  
Oktober 1998.
- IAI-TR-98-11** GENERALIZING GENERALIZED TRIES  
Ralf Hinze  
November 1998.
- IAI-TR-98-12** NUMERICAL REPRESENTATIONS AS HIGHER-ORDER  
NESTED DATATYPES  
Ralf Hinze  
Dezember 1998.
- IAI-TR-98-13** THE MYVIEW PROJECT: FROM HETEROGENEOUS BIBLIOGRAPHIC  
INFORMATION REPOSITORIES TO PERSONALIZED DIGITAL LIBRARIES  
Jens E. Wolff and Armin B. Cremers  
Dezember 1998.
- IAI-TR-98-14** THE USE OF COOPERATION SCENARIOS IN THE DESIGN AND  
EVALUATION OF A CSCW SYSTEM  
Oliver Stiernerling and Armin B. Cremers  
Dezember 1998.
- IAI-TR-98-15** PORTFOLIOOPTIMIERUNG MIT VERFAHREN AUS DER INFORMATIK  
Armin B. Cremers, Christoph Hundack, Jens Lüssem  
Dezember 1998.
- IAI-TR-99-1** DERIVING MONAD TRANSFORMERS  
Ralf Hinze  
Januar 1999.
- IAI-TR-99-2** POLYTYPIC PROGRAMMING WITH EASE  
Ralf Hinze  
Februar 1999.
- IAI-TR-99-3** EXPERIENCE- AND MODEL-BASED TRANSFORMATIONAL LEARNING  
OF SYMBOLIC BEHAVIOR SPECIFICATIONS  
Michael Beetz and Thorsten Belker  
März 1999.
- IAI-TR-99-4** PERFECT TREES AND BIT-REVERSAL PERMUTATIONS  
Ralf Hinze  
März 1999.

- IAI-TR-99-5** MANUFACTURING DATATYPES  
Ralf Hinze  
April 1999.
- IAI-TR-99-6** CONSTRUCTING RED-BLACK TREES  
Ralf Hinze  
Mai 1999.
- IAI-TR-99-7** NONLINEAR DISCRIMINANT ANALYSIS USING KERNEL FUNCTIONS  
Volker Roth and Volker Steinhage  
Juni 1999.
- IAI-TR-99-8** EFFICIENT GENERALIZED FOLDS  
Ralf Hinze  
Juni 1999.
- IAI-TR-99-9** A NEW APPROACH TO GENERIC FUNCTIONAL PROGRAMMING  
Ralf Hinze  
Juli 1999.
- IAI-TR-99-10** DISTRIBUTED COMPONENT-BASED TAILORABILITY FOR  
CSCW APPLICATIONS  
Oliver Stiernerling, Ralph Hinken, and Armin B. Cremers  
März 1999.
- IAI-TR-99-11** FLEXIBLE ALIASING WITH PROTECTION  
Günter Kniesel and Dirk Theisen  
Juni 1999.
- IAI-TR-99-12** XPRES: A RANKING APPROACH TO RETRIEVAL ON  
STRUCTURED DOCUMENTS  
J.E. Wolff, H. Flörke, A.B. Cremers  
Juli 1999.
- IAI-TR-99-13** THE EVOLVE TAILORING PLATFORM: SUPPORTING THE  
EVOLUTION OF COMPONENT -BASED GROUPWARE  
Oliver Stiernerling, Ralph Hinken, Armin B. Cremers  
September 1999.
- IAI-TR-99-14** MUTIPLE SIP STRATEGIES -  
A DYNAMIC APPROACH TO  
DEDUCTIVE QUERY PROCESSING  
Andreas Behrend  
Dezember 1999.
- IAI-TR-99-15** POLYTYPIC VALUES POSSESS POLYKIND TYPES  
Ralf Hinze  
Dezember 1999.
- IAI-TR-2000-1** PROBABILISTIC HYBRID ACTION MODELS FOR  
PREDICTING CONCURRENT PERCEPT-DRIVEN ROBOT BEHAVIOR  
Michael Beetz and Henrik Grosskreutz  
Juni 2000.



- IAI-TR-2001-1** NEWSIEVE  
EIN SELBSTADAPTIVER FILTER FÜR TEXTUELLE INFORMATIONEN  
Elmar Haneke  
Januar 2001.
- IAI-TR-2001-2** PERSPEKTIVEN: PERSISTENTE OBJEKTE MIT ANWENDUNGSSPEZIFISCHER  
STRUKTUR UND FUNKTIONALITÄT  
Wolfgang Reddig  
November 2001.
- IAI-TR-2001-3** A NEW ADAPTIVE ALGORITHM FOR THE POLYGONIZATION OF  
NOISY IMAGERY  
Lothar Hermes and Joachim M. Buhmann  
Dezember 2001.
- IAI-TR-2002-1** SECOND WORKSHOP ON ASPECT-ORIENTED SOFTWARE DEVELOPMENT  
P. Costanza, G. Kniesel, K. Mehner, E. Pulvermüller and A. Speck  
Februar 2002.
- IAI-TR-2002-2** CONSTRUCTING TOURNAMENT REPRESENTATIONS: AN EXERCISE IN  
POINTWISE RELATIONAL PROGRAMMING  
Ralf Hinze  
Februar 2002.
- IAI-TR-2002-3** CHURCH NUMERALS, TWICE!  
Ralf Hinze  
Februar 2002.
- IAI-TR-2002-4** SCHNELLE NUMERISCHE VERFAHREN ZUR BEWERTUNG VON  
EUROPÄISCHEN OPTIONEN IN ERWEITERTEN BLACK-SCHOLES  
MARKTMODELLEN  
Stefan Alex Popovici  
Mai 2002.
- IAI-TR-2002-5** OPTIMAL CLUSTER PRESERVING EMBEDDING OF NON-METRIC  
PROXIMITY DATA  
Volker Roth, Julian Laub, Motoaki Kawanabe, Joachim M. Buhmann  
Juni 2002.
- IAI-TR-2002-6** INTERNET-BASED ROBOTIC TELE-PRESENCE  
Dirk Schulz  
Mai 2002.
- IAI-TR-2002-7** PATH BASED CLUSTERING  
Bernd Fischer and Joachim M. Buhmann  
August 2002.
- IAI-TR-2002-8** THE GENERALIZED LASSO: A WRAPPER APPROACH TO  
GENE SELECTION FOR MICROARRAY DATA  
Volker Roth  
August 2002.

- IAI-TR-2002-9** PLANNING TO OPTIMIZE THE UMTS CALL SET-UP FOR THE EXECUTION OF MOBILE APPLICATIONS  
Roman Englert  
Oktober 2002.
- IAI-TR-2003-1** PROGRAM-INDEPENDENT COMPOSITION OF CONDITIONAL TRANSFORMATIONS  
Günter Kniesel and Helge Koch  
Juni 2003.
- IAI-TR-2003-2** THE JMANGLER TUTORIAL  
Günter Kniesel  
Juli 2003.
- IAI-TR-2003-3** STATIC DEPENDENCY ANALYSIS FOR CONDITIONAL PROGRAM TRANSFORMATIONS  
Günter Kniesel  
Juli 2003.
- IAI-TR-2003-4** OBJEKTORIENTIERTE DATENMODELL-INTEGRATION FÜR EIN OFFENES, PALÄOÖKOLOGISCHES INFORMATIONSSYSTEM  
A.B. Cremers, R. Dikau (Hrsg.)  
Dezember 2003.
- IAI-TR-2003-5** CONCEPTS FOR THE REPRESENTATION, STORAGE, AND RETRIEVAL OF SPATIO-TEMPORAL OBJECTS IN 3D/4D GEO-INFORMATION-SYSTEMS  
Jörg Siebeck  
Dezember 2003.
- IAI-TR-2004-1** MODELL- UND DIAGNOSEBASIERTES TRANSFORMATIONSLERNEN VON SYMBOLISCHEN PLÄNEN FÜR MOBILE ROBOTER  
Michael Beetz, Thorsten Belker, Armin B. Cremers  
Februar 2004.
- IAI-TR-2004-2** UNANTIZIPIERTE SOFTWARE-EVOLUTION - ABSCHLUSSBERICHT DES TAILOR PROJEKTS (DFG-PROJEKT CR 65/13)  
Pascal Costanza, Günter Kniesel, Armin B. Cremers  
Oktober 2004.
- IAI-TR-2004-3** A META MODEL FOR ASPECTJ  
YAN Han, Günter Kniesel, Armin B. Cremers  
Oktober 2004.
- IAI-TR-2004-4** UNIFORM GENERICITY FOR ASPECT LANGUAGES  
Tobias Rho, Günter Kniesel  
Dezember 2004.
- IAI-TR-2006-1** A LOGIC FOUNDATION FOR PROGRAM TRANSFORMATIONS  
Günter Kniesel  
Januar 2006.

- IAI-TR-2006-2** “SCRAP YOUR BOILERPLATE” RELOADED  
Ralf Hinze, Andres Löh, and Bruno C. d. S. Oliveira  
Januar 2006.
- IAI-TR-2006-3** ‘AOSD.06 INDUSTRY TRACK PROCEEDINGS’  
Fifth International Conference on Aspect-Oriented Software Development,  
Bonn, Germany, March 20-24  
Matt Chapman, Alexandre Vasseur, Günter Kniesel (Eds.)  
März 2006.
- IAI-TR-2006-4** INDEPENDENT EVOLUTION OF DESIGN PATTERNS AND APPLICATION  
LOGIC WITH GENERIC ASPECTS - A CASE STUDY  
Tobias Rho, Günter Kniesel  
April 2006.
- IAI-TR-2006-5** NONPARAMETRIC DENSITY ESTIMATION FOR HUMAN POSE TRACKING  
Thomas Brox, Bodo Rosenhahn, Uwe Kersting, and Daniel Cremers  
April 2006.
- IAI-TR-2006-6** EWAS 2006  
3RD EUROPEAN WORKSHOP ON ASPECTS IN SOFTWARE  
Günter Kniesel (Ed.)  
August 2006.
- IAI-TR-2006-7** A FIXPOINT APPROACH TO STATE GENERATION FOR  
STRATIFIABLE DISJUNCTIVE DEDUCTIVE DATABASES  
Andreas Behrend  
Dezember 2006.
- IAI-TR-2006-8** INTERAKTIVE, PLAN-BASIERTE SOFTWAREAGENTEN  
IM VERTEILTEN SUPPLY CHAIN MANAGEMENT  
ABSCHLUSSBERICHT IM RAHMEN DES DFG-SCHWERPUNKTPROGRAMMS  
INTELLIGENTE SOFTWAREAGENTEN UND BETRIEBSWIRTSCHAFTLICHE  
ANWENDUNGSSZENARIEN  
Michael Beetz, Armin B. Cremers, Axel Kuhn, Bernd Hellingrath,  
Jürgen Schumacher, Andre Alberti  
Dezember 2006.
- IAI-TR-2006-9** “ZEITSYNCHRONISATION IN TMOTESKY SENSORNETZEN”  
Serge Shumilov, Boris Iven, Oliver Mali, Roman Saul  
Dezember 2006.
- IAI-TR-2007-1** INTRODUCING CURVATURE INTO GLOBALLY OPTIMAL  
IMAGE SEGMENTATION: MINIMUM RATIO CYCLES  
ON PRODUCT GRAPHS  
Thomas Schoenemann, Daniel Cremers  
April 2007.

- IAI-TR-2007-2** GLOBALLY OPTIMAL IMAGE SEGMENTATION WITH AN ELASTIC SHAPE PRIOR  
Thomas Schoenemann, Daniel Cremers  
April 2007.
- IAI-TR-2007-3** DUAL-SPACE GRAPH CUTS FOR MOTION LAYER DECOMPOSITION  
Thomas Schoenemann and Daniel Cremers  
April 2007.
- IAI-TR-2007-4** ITERATED AND EFFICIENT NONLOCAL MEANS FOR DENOISING OF TEXTURAL PATTERNS  
Thomas Brox, Oliver Kleinschmidt, and Daniel Cremers  
August 2007.
- IAI-TR-2007-5** DESIGN AND IMPLEMENTATION OF A WORKFLOW ENGINE  
Sebastian Bergmann  
September 2007.
- IAI-TR-2007-6** ON LOCAL REGION MODELS AND THE STATISTICAL INTERPRETATION OF THE PIECEWISE SMOOTH MUMFORD-SHAH FUNCTIONAL  
Thomas Brox and Daniel Cremers  
September 2007.